

DENON[®]

AH-GC25NC

Noise Cancelling Over-Ear Headphone

Owner's Manual



Preparation

Unpacking	3
Features	4
Sound quality	4
Functions	4
Part names and functions	5
Charging / Battery status	6
Wearing	7

Connections

Connecting the audio cable	8
-----------------------------------	----------

Operation

Decreasing outside noise (Noise cancell function)	9
Listening to surrounding sound (ambient sound mix function)	11
Auto standby function	12
Information	13
Storage in the carrying case	13
Auto dimmer function	13

Troubleshooting

Troubleshooting	14
Power does not turn on / power is turning off automatically	14
The device cannot be charged	15
No sound comes out	15
Sound is distorted, noisy, or cuts in and out	15

Appendix

Precautions for Use	16
Disposal of these headphones	16
Specifications	17





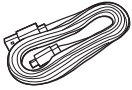




Thank you for purchasing this product.

To ensure proper operation, please read this Owner's Manual carefully before using the product.

Unpacking

Check that all of these are present before using this device.

 <p>Quick Start Guide</p>	 <p>Safety Instructions</p>	 <p>Audio cable (approx. 1.3 m)</p>	 <p>Audio cable (approx. 1.3 m) with remote control mic</p>
 <p>USB cable (Micro-B connector, approximately 1.2 m)</p>	 <p>Carrying case</p>	 <p>Accessory pouch</p>	



Features

Sound quality

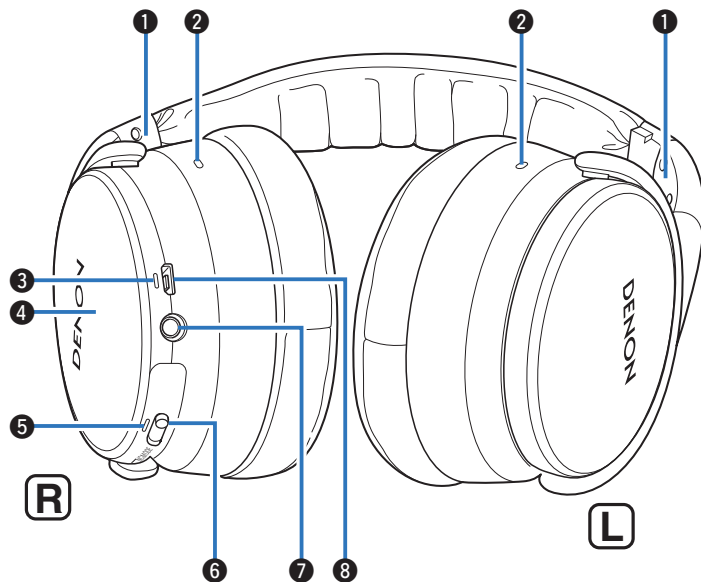
- Equipped with a 40 mm free edge driver for the ideal piston motion. This enables natural, delicate audio to be enjoyed with minimal distortion.

Functions

- When the noise cancelling function is turned on, you can hear clear sound even if you are in a noisy location such as inside a train. Equipped with three noise cancel modes with different effects for use as needed for the surrounding environment.



Part names and functions



❶ L/R Indicators

❷ Noise cancelling microphones

❸ Charging LED

❹ Tap sensor panel

Lightly tap with your finger to toggle the ambient sound mix function on or off. (☞ p. 11)

❺ NC (Noise Cancel) LED

❻ Control switch (NC MODE)

- Indicates the remaining battery power. (☞ p. 7)
- Sets the noise cancelling function. (☞ p. 9)
- Turns the power off. (☞ p. 10)
- Sets auto standby function. (☞ p. 12)

❼ Stereo mini jack (2.5 mm)

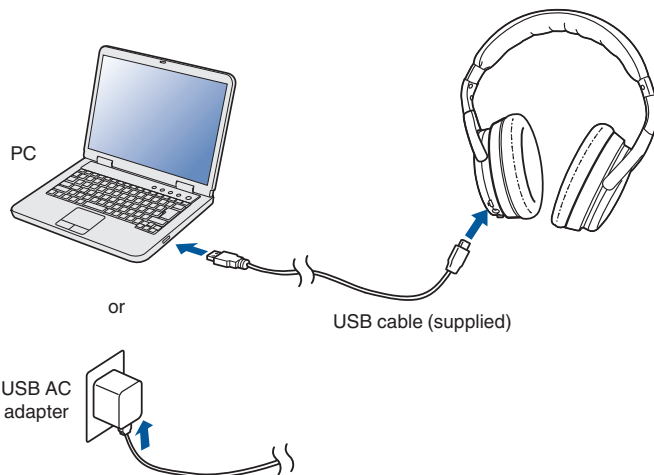
Connects to playback devices using the included audio cable. (☞ p. 8)

❽ USB port (Micro-B)



Charging / Battery status

Connect the headphones to a computer or USB AC adapter (sold separately) using the supplied dedicated USB cable to charge the battery.



The charging status can be checked from the charging LED on headphones.

Charging status	Color of charging LED	
Charging	Red	
Fully charged	Green	



- When using the headphones for the first time after purchase or when the remaining power of the rechargeable battery is low, charge the battery.
- You can connect the headphones to a device using the supplied audio cable to enjoy listening to music even if the battery is drained. (☞ p. 8)
- The noise cancelling function can be used for approximately 30 hours when the battery is fully charged.
- It takes approximately 2 hours to fully charge the rechargeable battery from the state of no remaining battery power.
- The usable time of the headphones differs depending on the temperature of the environment in which they are used and method of use.

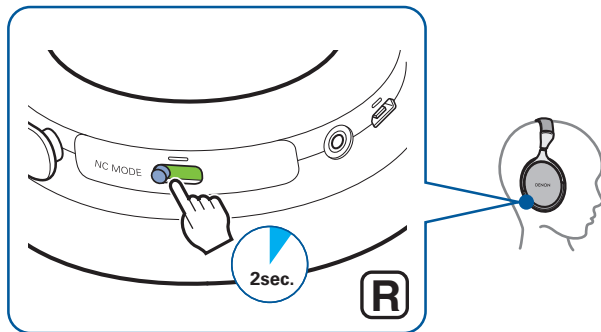
NOTE

- When connecting the USB cable to the USB port, be sure to match the cable connector with the shape of the socket. Forcing the connector into the socket will cause damage.
- The rating of the charging output should be DC 5 V, 2.4 A or less.



■ Checking the remaining battery power

The remaining power of the rechargeable battery can be checked from the number of alert sounds or the number of times the charging LED flashes. Slide the NC MODE switch to the left and hold it there for approximately 2 seconds.



Number of alert sounds	Number of times the charging LED flashes	Remaining time of rechargeable battery
Three times	Three times	Approx. 30 hours
Twice	Twice	Approx. 10 hours
Once	Once	Less than 1 hours



- When the remaining power of the rechargeable battery is running low, the charging LED flashes at approximately 3-second intervals together with an alert sound.

Wearing

Adjust the slider to the preferred length.



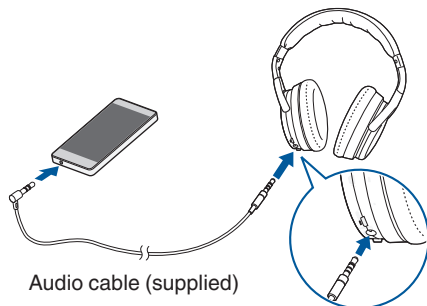
- In order to hear the best quality sound, be sure that the ear pads correctly cover both the left and right ears. If there are gaps between your ears and the headphone ear pads, sound will leak and the bass level and effectiveness of the noise cancelling function will be reduced.

NOTE

- Be careful not to trap your fingers, etc. in the moving parts.
- Do not pull the slider too forcefully.



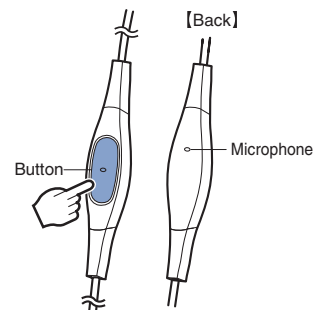
Connecting the audio cable



- Use the cable to connect and listen to music from your device even when the rechargeable battery is exhausted. In this case, the noise cancelling function will be unavailable.

■ Using the audio cable with remote control mic

An audio cable with a remote control mic as well as an audio cable are included with these headphones. Use the audio cable with the remote control mic to connect with remote control-compatible playback devices to play and pause music, as well as receive, make and hang up phone calls.



Audio playback/pause

Press the remote control button.

Answer / hang up phone call

Press the remote control button when a call is incoming or while on a call.



- Enabled remote control operations may vary depending on the device connected, and mic operations may not work correctly.



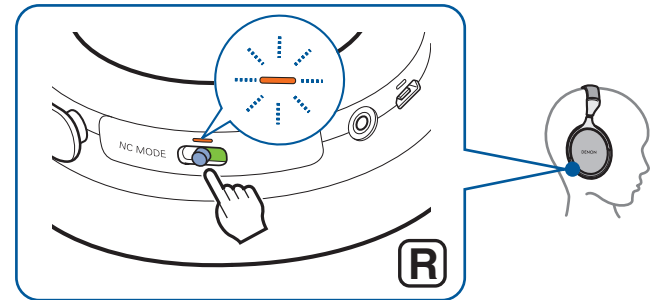
Decreasing outside noise (Noise cancell function)

Turn the noise cancelling function on while listening to music to reduce surrounding noise and better focus on your music. These headphones are equipped with three noise cancelling modes that can be set as needed for the surrounding environment. Try using the noise cancelling function when you aren't listening to music to help yourself concentrate in quiet environments.

■ Turning the noise cancelling function on

1 Slide the NC MODE switch to the center.

The NC LED blinks orange and the noise cancelling function turns on.



■ Switching the noise cancelling mode

1 Slide the NC MODE switch to the left while the noise cancelling function is on.

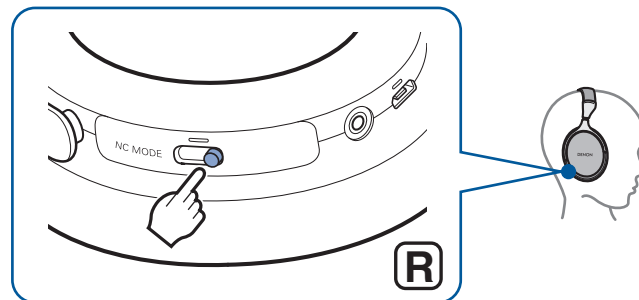
- The setting changes each time you slide the switch to the left.

Setting	LED display (repeats)	Number of alert sounds	Description
Airplane mode	Blinks once	Once	The optimal mode to use when on a plane.
City mode	Blinks twice	Twice	The optimal mode to use when on trains or buses, or when in an urban area.
Office mode	Blinks three times	Three times	The optimal mode to use in relatively quiet rooms.

■ Turning the noise cancelling function and power off

1 Slide the NC MODE switch to the right.

The NC LED turns off and the noise cancelling function and power turn off.



- A small amount of power is consumed even when the power is off.



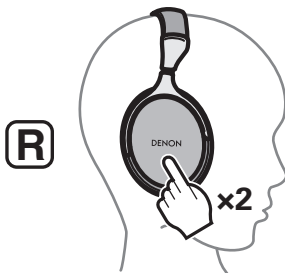
Listening to surrounding sound (ambient sound mix function)

Turn on the ambient sound mix function while listening to music to use the mic to mix surrounding sound into the music you are listening to. Enjoying music while also being able to hear surrounding sound is useful when you are listening to an in-flight announcement or talking with your headphones on.

■ Turning the ambient sound mix function on

1 Tap the center of the tap sensor panel twice.

A warning sounds 4 times, the NC LED lights orange and the ambient sound mix function turns on.



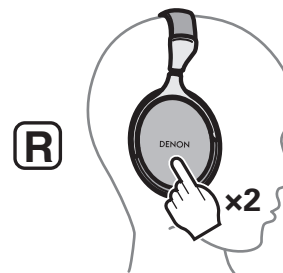
- Ambient sound is not mixed into the low range that is not affected by announcements and conversation.

■ Turning the ambient sound mix function off

1 Tap the center of the tap sensor panel twice while the ambient sound mix function is on.

An alert sounds, the NC LED starts blinking again, and the ambient sound mix function turns off.

- Depending on the noise cancelling mode setting, the alert will sound once (Airplane mode), twice (City mode), or three times (Office mode).



- Turn off the ambient sound mix function by sliding the NC MODE switch to the left.



Auto standby function

To keep the battery from draining, the headphones automatically turn off after no operations are performed or they are stationary* for at least 10 minutes. The default setting for the auto standby function is "On".

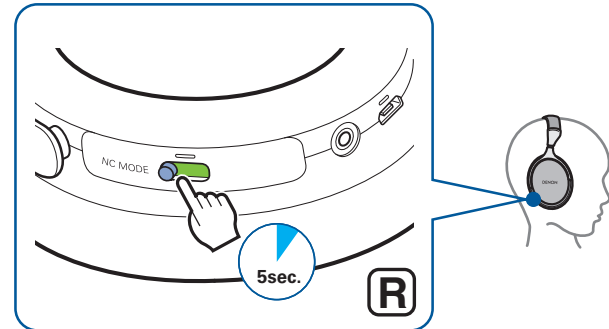
* The headphones are stationary when they have been placed on a surface such as a desk and are completely motionless.

■ Turning the auto standby function on and off

1 Slide the NC MODE switch to the left and hold for approximately 5 seconds.

An alert sounds and the auto standby switches between on and off.

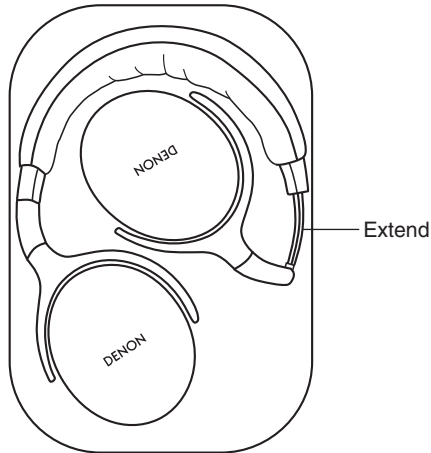
- When the auto standby function turns on: alert sound ↗
- When the auto standby function turns off: alert sound ↘



Information

Storage in the carrying case

Remove the cable from the headphones and store them in the included carrying case as shown below.



Auto dimmer function

The auto dimmer function changes the LED brightness when the headphones are tilted past the defined angle. When the headphones are on, the LED dims so that the brightness does not disturb people around you. The brightness increases if the headphones are laid horizontally when charging, etc.

NOTE

- Do not force them into the carrying case. Doing so may damage the headphones.



Troubleshooting

First, check the following.

1. Are all of the connections correct?
2. Were the instructions in the manual followed correctly?
3. Is the connected device being operated correctly?

If the headphones do not operate properly, check the corresponding issue here.

If the issue is not covered here, there may be a malfunction. Contact the store where you purchased the headphones. If the staff at the store where you purchased the headphones also do not know how to resolve the issue, contact the Denon Customer Service Center or your nearest Repairs Center.

Power does not turn on / power is turning off automatically

Power does not turn on.

- When the rechargeable battery has no power remaining, connect the headphones to an AC adapter or computer using the supplied USB cable to charge the battery. (👉 p. 6)

Power is turning off automatically.

- The auto standby function has turned on. In auto standby mode, the headphones automatically turn off after no operations are performed or they are stationary (when they have been placed on a surface such as a desk and are completely motionless) for at least 10 minutes. To turn off auto standby mode, slide the NC MODE switch to the left and hold for approximately 5 seconds while auto standby mode is on. (👉 p. 12)



The device cannot be charged

The headphones cannot be charged.

- Check whether the power plug is correctly inserted into the power outlet. (👉 p. 6)
- Make sure the supplied USB cable is inserted correctly into the headphones. (👉 p. 6)
- If the headphones are connected to the computer via the USB port, check that the computer is powered on.

No sound comes out

No sound comes out.

- Make sure the connected device is on.
- Adjust the volume of the connected device to a suitable level.
- Make sure the included audio cable is properly connected. (👉 p. 8)

Sound is distorted, noisy, or cuts in and out

Sound is distorted, noisy, or cuts in and out.

- Adjust the volume of the connected device to a suitable level.



Precautions for Use

- Be sure to read the Owner's Manual of the device that you want to connect.
- Check the volume settings when using the headphones on public transport or in public places and make sure you do not disturb people around you.

Disposal of these headphones

The rechargeable battery built into these headphones can be recycled. Contact the Denon Customer Service Center for details on disposing of these headphones.



Specifications

Type:	Dynamic type
Drive units:	φ40 mm
Impedance:	16 Ω/ohms
Sound pressure sensitivity:	98 dB/mW
Maximum input:	1,000 mW
Playback frequency:	5 – 50,000 Hz
Continuous playback time (noise cancellation function on):	Approx. 30 hours
Operating temperature range:	5 °C - 40 °C
Power supply:	DC 3.7 V (internal lithium polymer rechargeable battery)
Weight:	287 g

* For purposes of improvement, specifications and design are subject to change without notice.



DENON®

www.denon.com

3520 10657 00ADA

Copyright © 2019 D&M Holdings Inc. All Rights Reserved.